

GILPIN TOWNSHIP NEWSLETTER

"Room to Roam"



Volume 3
Spring/Summer 2024

GILPIN TOWNSHIP NEWS

A Letter from the Chairman

Cover Photo by Mindy Altman



CHAIRMAN CHARLES STULL

Spring brings the promise of outdoor adventures in Gilpin Township! On April 1st, Armstrong Trail will mark the grand opening of the Kiski Bridge, unlocking access to 10 miles of scenic trail from Rosston (Ford City) to Schenley. An additional four miles extending to Leechburg are set to open by May 1st, offering a delightful route for bikers and hikers. Please note that the trail concludes in Leechburg and at the Allegheny Township end of the Kiski Bridge. Crossing beyond this point is strictly prohibited, as it constitutes a federal offense due to the active rail line on the opposite side.

Plans are underway for a flyover of the rail line to connect to the Treadway Trail in Allegheny Township, enhancing connectivity for outdoor enthusiasts. While the ceremony is April 1st, the trail is open now!

As part of our routine summer maintenance, the Township will embark on resurfacing and sealing various roadways. We have numerous grant applications pending for resurfacing projects, and roads will be prioritized based on factors such as condition, traffic volume, and population density. Stay tuned for announcements in the coming months as we hope to secure funding and finalize project plans.

Gilpin Township is experiencing a surge in development, with the construction of five or more new homes in the past year and at least two additional projects on the horizon. Thanks to the implementation of our new Zoning Ordinance passed in November, we can foster continued development while preserving the rural charm that makes our township unique.

Gilpin Township,
Armstrong County, PA



589 State Route 66
Leechburg, PA 15656
Phone: 724-845-0981

GILPIN TOWNSHIP NEWS

Meetings to know

Gilpin Township Planning Commission

1st Tuesday of Every Month @
6:00 PM

Gilpin Township Municipal
Building

589 State Route 66
Leechburg, PA 15656

Gilpin Township Municipal Authority (Water/Sewer)

2nd Tuesday of Every Month @
6:30 PM

Gilpin Township Municipal
Authority

874 State Route 66
Leechburg, PA 15656

Gilpin Township Board of Supervisors

3rd Tuesday of Every Month @
7:00 PM

Gilpin Township
Municipal Building

589 State Route 66
Leechburg, PA 15656

Gilpin/Leechburg Joint Recreational Authority

4th Tuesday of Every Month @
6:00 PM

Gilpin/Leechburg Park
(Weather Permitting)
or

LACDC Coworking Building
(Leechburg)

Gilpin Township Zoning Hearing Board

As Needed for Zoning Appeals,
Variance Hearings

Gilpin Township
Municipal Building

589 State Route 66
Leechburg, PA 15656

Industrial and Economic Development Advisory Committee

1st Monday of Every Month @
6:00 PM

Gilpin Township
Municipal Building

589 State Route 66
Leechburg, PA 15656

Did you know?

Gilpin Township has a website full of resources anywhere from Zoning information to contact information. Check it out using the below QR Code!



Fun Fact:

The first natural gas used in industry in the nation was pumped from Gilpin Township to be used in Leechburg.

Gilpin Township,
Armstrong County, PA



589 State Route 66
Leechburg, PA 15656
Phone: 724-845-0981

GILPIN TOWNSHIP NEWS

Upcoming



**April 1st
11AM-1PM**

Celebrate the opening of the Kiski Junction Corridor and the Kiski Bridge as the newest extension of the Armstrong Trail. RSVP required.

Armstrong Trails Celebration



GTVFD Easter Egg Hunt

Events



**March 23rd
1:00 PM**

Join the Gilpin Township Volunteer Fire Department for their annual Easter Egg Hunt at the Gilpin/Leechburg Park! Gilpin children of all ages welcome! Rain date March 24th.

Gilpin Township,
Armstrong County, PA

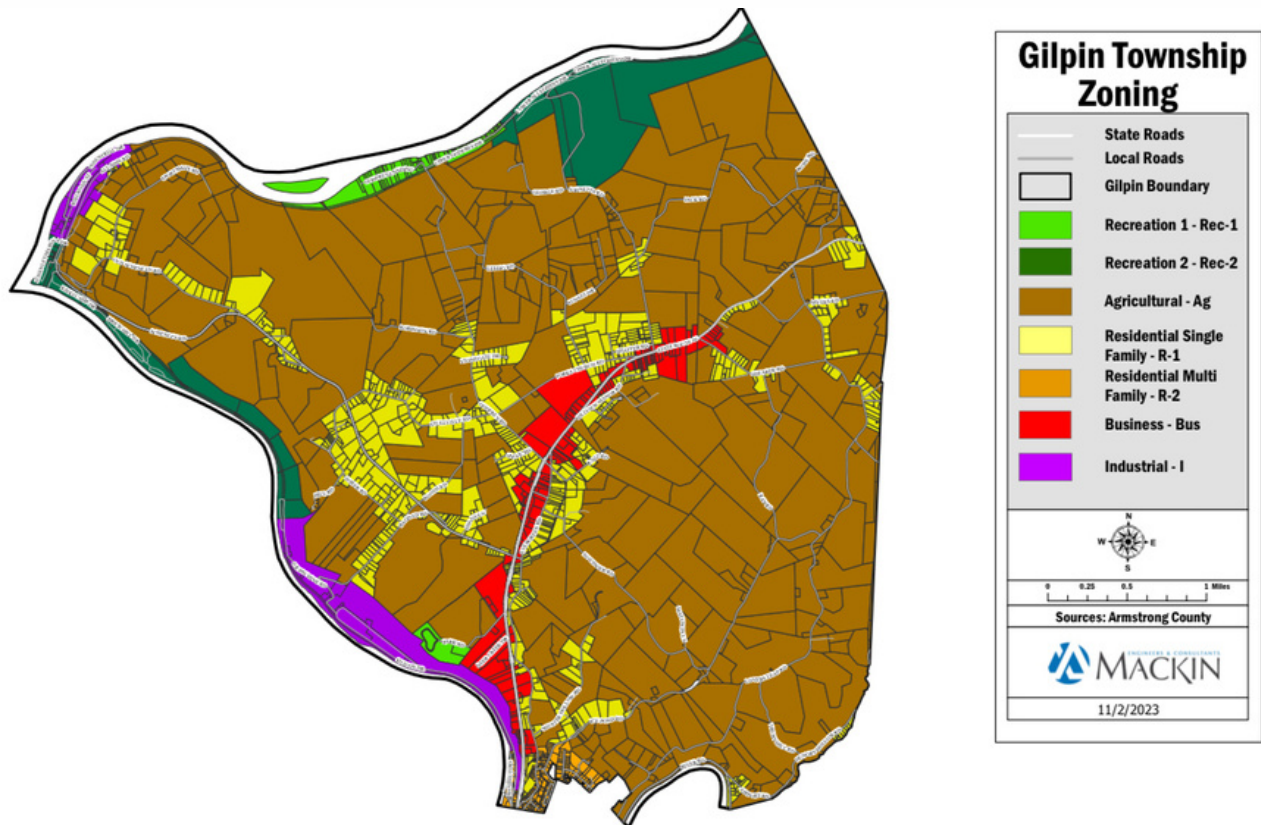


589 State Route 66
Leechburg, PA 15656
Phone: 724-845-0981

GILPIN TOWNSHIP NEWS

What's been happening?

In November, Following nearly two years of public meetings, Steering Committee workshops, and reviews by the public, the Planning Commission, and the entire Board, the Board of Supervisors voted to adopt the new Gilpin Township Zoning Ordinance, replacing the 1985 Ordinance. The ordinance and map are available for viewing at www.gilpintwp.com/zoning.



Gilpin Township,
Armstrong County, PA



589 State Route 66
Leechburg, PA 15656
Phone: 724-845-0981

GILPIN TOWNSHIP NEWS

New Business Spotlight!



The Gilpin Township Board of Supervisors would like to welcome BBZ Baggerz & Customz to Gilpin Township! BBZ opened in Gilpin Township on January 2, 2024 at 289 State Route 66. BBZ specializes in the customization and building of Motorcycles of all types. They will host an open house at their new location on April 20 from 12-4 PM. We're excited to have them join our business district!

Gilpin Township,
Armstrong County, PA



589 State Route 66
Leechburg, PA 15656
Phone: 724-845-0981

GILPIN TOWNSHIP NEWS

Township Contacts

General Inquiries

Telephone: 724.845.0981

Fax: 724.845.6376

Email: secretary@gilpintwp.com

589 State Route 66
Leechburg, Gilpin Township,
PA 15656

HOURS of Operation:
Monday: 9-4, Tues-Fri: 9-2:30

Gilpin Township Supervisors

Charles Stull
Supervisor, Chairman
cstull@gilpintwp.com

Tina Thompson
Supervisor, Vice-Chair
tthompson@gilpintwp.com

Jeremy Smail
Supervisor
jsmail@gilpintwp.com

Kevin Miller
Supervisor, Road Maintenance
Chair
kmiller@gilpintwp.com

Kris Kulick
Supervisor
kkulick@gilpintwp.com

Solicitor

Timothy Miller
tmiller@damdpc.com

**Secretary/Treasurer, Zoning
Officer, Open Records Officer**
Sharon Long

724.845.0981
secretary@gilpintwp.com

Code Enforcement, EMC
Chris Fabec

724.845.0981
cfabec@gilpintwp.com
Southern Armstrong Regional PD
Non-Emergency: 724.845.7979
Emergency: 911
Fax: 724.845.6376

589 State Route 66
Leechburg, Gilpin Township,
PA 15656

Gilpin Township Volunteer

Fire Department
Hall Rental and
Non-Emergency:
724.845.7200
Emergency: 911
Email: gtvfd@windstream.net
113 Fire Hall Road
Leechburg, Gilpin Township,
PA 15656

Gilpin Township Road

Maintenance Department

Telephone: 724.845.7165

Fax: 724.845.6376

Email:
Roadcrew@gilpintwp.com

Gilpin Township Tax Collector

Sonya Mazak

Telephone: 724.845.6034

Fax: 724.845.6034

For hours, please call.

962 Ice Pond Road,
Leechburg, Gilpin Township,
PA 15656

Gilpin Township Municipal Authority

Telephone: 724.845.9574

Fax: 724.845.9574

Hours:
Mon: 10 AM-2PM, 6 PM-8PM
Tues: 10 AM-2 PM

874 SR 66
Leechburg, Gilpin Township,
PA 15656

Gilpin/Leechburg Park

Pavilion Rentals
Contact Hannah Blumer
Telephone: 724.845.8475

Gilpin Township,
Armstrong County, PA



589 State Route 66
Leechburg, PA 15656
Phone: 724-845-0981

GILPIN TOWNSHIP NEWS

Armstrong County Contacts

Armstrong County Courthouse

**450 East Market
Street
Kittanning, PA
16201**

**Phone: (724) 543-
2500**

**Standard
Operating Hours:
8:00 AM – 4:30 PM,
Monday – Friday**

**Commissioners
724-548-3215**

**Area Agency on
Aging
724-548-3290**

**Children, Youth
and Family
Services
724-548-3466**

**District Attorney
724-548-3209**

**Magisterial District
Judge James
Andring
724-842-3571**

**Domestic Relations
724-548-3249**

**Jury
Commissioners
724-548-3286**

**Public Defender
724-548-3258**

**Sheriff
724-548-3265**

**Tax Claim
724-548-3340**

**Veterans Affairs
724-548-3441**

**Voter Registration
&
Elections
724-548-3222**

Gilpin Township,
Armstrong County, PA



589 State Route 66
Leechburg, PA 15656
Phone: 724-845-0981

GILPIN TOWNSHIP NEWS

Thanks for reading!
Next issue in
September.

Your Government

Board of Supervisors

Charles Stull, Chairman
Tina Thompson, Vice-Chair
Jeremy Smail
Kris Kulick
Kevin Miller

Planning Commission

Jim Catlos
Brian Bing
Donna Rentler

Zoning Hearing Board

Jim Catlos
Beverly Bish
Beth McDonald

Auditors

Charlotte Teeters
Jean Stull
VACANT

Board of County Commissioners

John Strate
Anthony Shea
Pat Fabian

State Representative

60th District

Abby Major

State Senator

41st District

Joe Pittman

US Representative

15th District

Glenn "GT" Thompson

US Senators

Bob Casey
John Fetterman

Joint Recreation Authority

Robert Pastva (Gilpin)
Hannah Blumer (Leechburg)
Glenda Paul (Leechburg)
Kirk Klasnick (Gilpin)
Robert George (Gilpin)
Cindy Cinpinski (Gilpin)
Gregory Paul (Gilpin)

Municipal Authority

Phillip McConville
Tom Dubovi
Duane Knepshield
Sonya Mazak
Matthew Szarek
Jack McIntyre
Joe Kowal

Gilpin Township,
Armstrong County, PA



589 State Route 66
Leechburg, PA 15656
Phone: 724-845-0981